

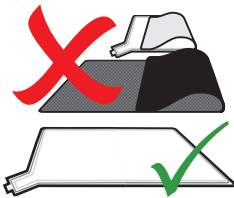
**2700 - 6 Channel Cordless Falls Monitor**

**Included Accessories**

2642 Caregiver Reset Key

**Optional Accessories (Sold Separately)**

- Cordless Pads & Mats: 3515, 2629, 2630, 2624
- Corded (Premium) Pads and Mats: 3516, 2626, 2628, 2633
- 2719 Cordless Pad / Mat Transmitter
- 2636 Easy Release Seatbelt
- 2406 Plug Pack 6Vdc
- 2642 Caregiver Reset Key
- 2721 iBeam
- 2588 Personal Emergency Transmitter (PET)
- 3502 Wireless Handset
- 3503 Wireless Magnetic Reed Switch
- 2558 Wireless Waterproof Call Button with Pull Cord
- 2642 Caregiver Reset Key
- 3504 ActiveCare Bracket
- Nurse Call Cables: 2643, 2646, 2493, 2461, 2460



Do NOT fold pads or mats when in transit or storage.

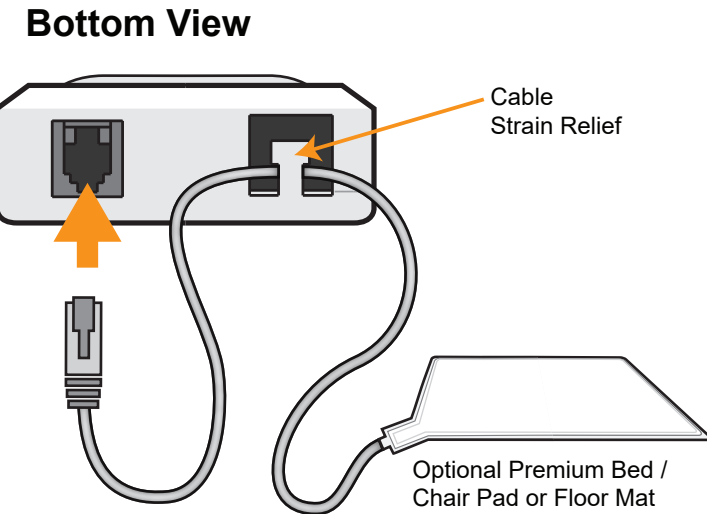
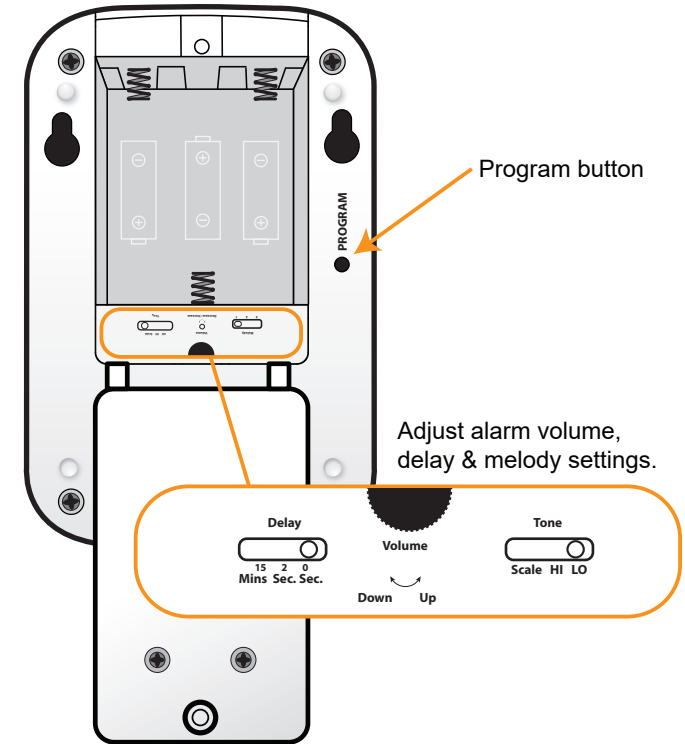
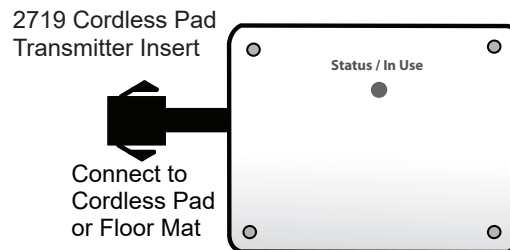
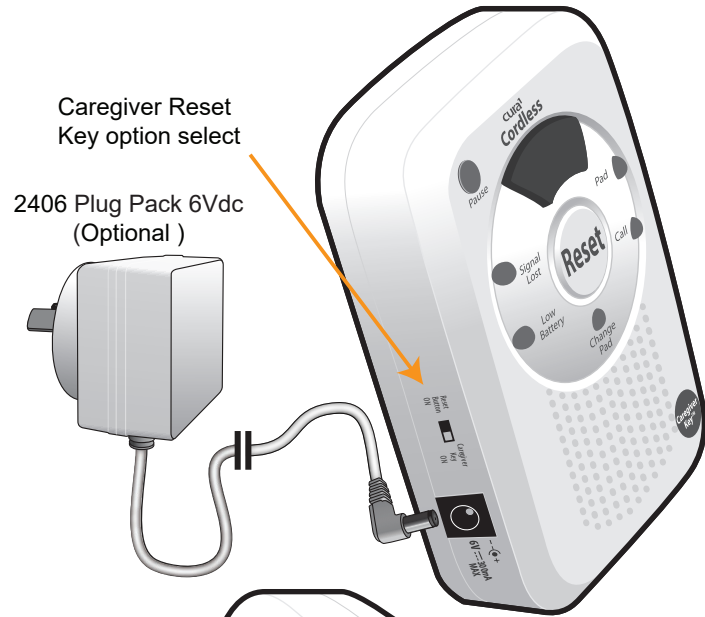
Keep pads & mats flat at all times



Do not immerse or wash pads or mats under running water. Use a damp cloth (1/1000 bleach solution) & wipe clean. Dry all spills on mats immediately.



All our products are supplied with a full warranty and are guaranteed to be free from defects in material and workmanship

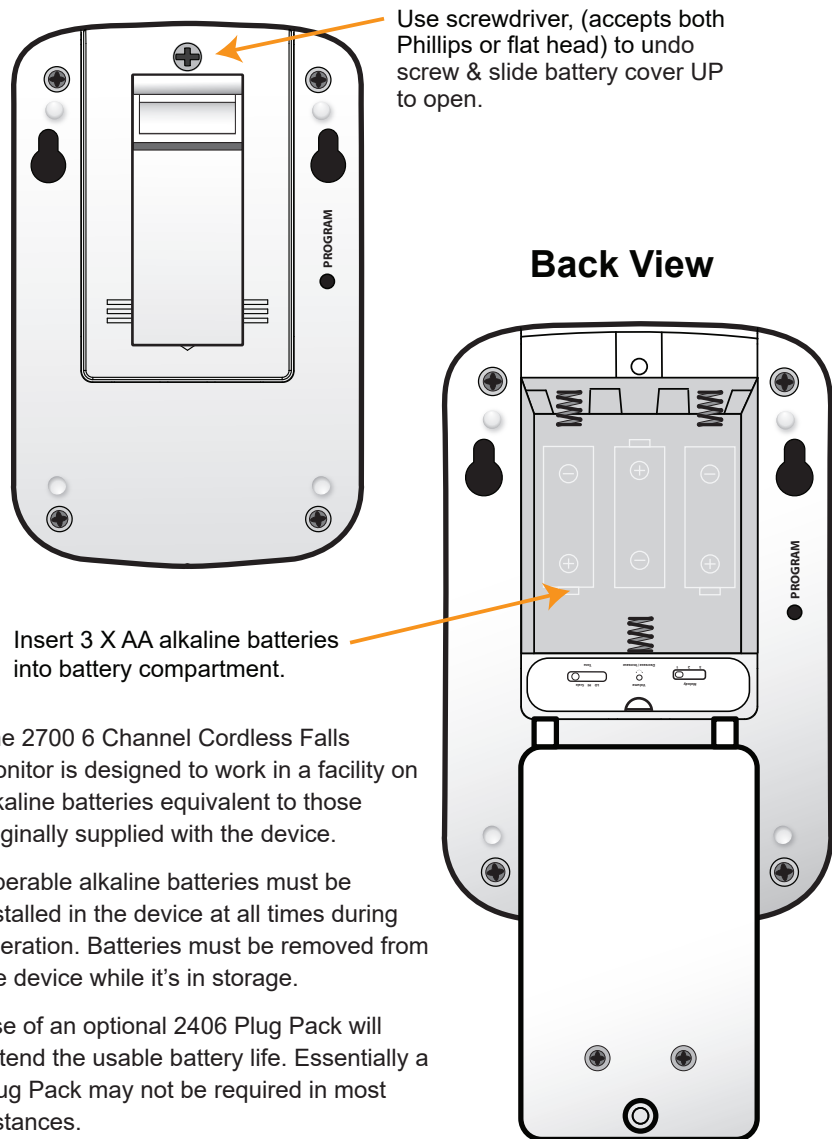


# QUICK START GUIDE

## 2700 - 6 Channel Cordless Falls Monitor

### Step 1

Insert 3 x Alkaline AA Batteries.



Use screwdriver, (accepts both Phillips or flat head) to undo screw & slide battery cover UP to open.

### Back View

Insert 3 X AA alkaline batteries into battery compartment.

The 2700 6 Channel Cordless Falls Monitor is designed to work in a facility on alkaline batteries equivalent to those originally supplied with the device.

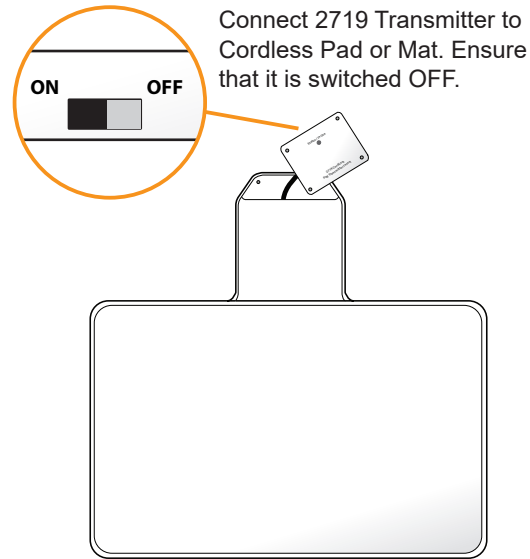
Operable alkaline batteries must be installed in the device at all times during operation. Batteries must be removed from the device while it's in storage.

Use of an optional 2406 Plug Pack will extend the usable battery life. Essentially a Plug Pack may not be required in most instances.

**Test falls monitor prior to every use.**

### Step 2

Pair with cordless Pad/s or floor Mat.



Connect 2719 Transmitter to Cordless Pad or Mat. Ensure that it is switched OFF.

1. Place up to six cordless pads or mats within reach. Each pad or mat must have a 2719 Cordless Pad Transmitter Insert connected & turned OFF.

2. Press & hold the Program button on back of the Monitor until you hear 3 beeps.

3. The display will briefly display "PP" and then "01", where "0" indicates the memory slot is open and "1" is the device number from 1 to 6. Turn ON the first Pad Transmitter.

4. The Monitor will beep 3 times and the display will briefly change to "F1" where "F" indicates that memory slot "1" is now full. The display will change to the next available empty slot e.g. "02".

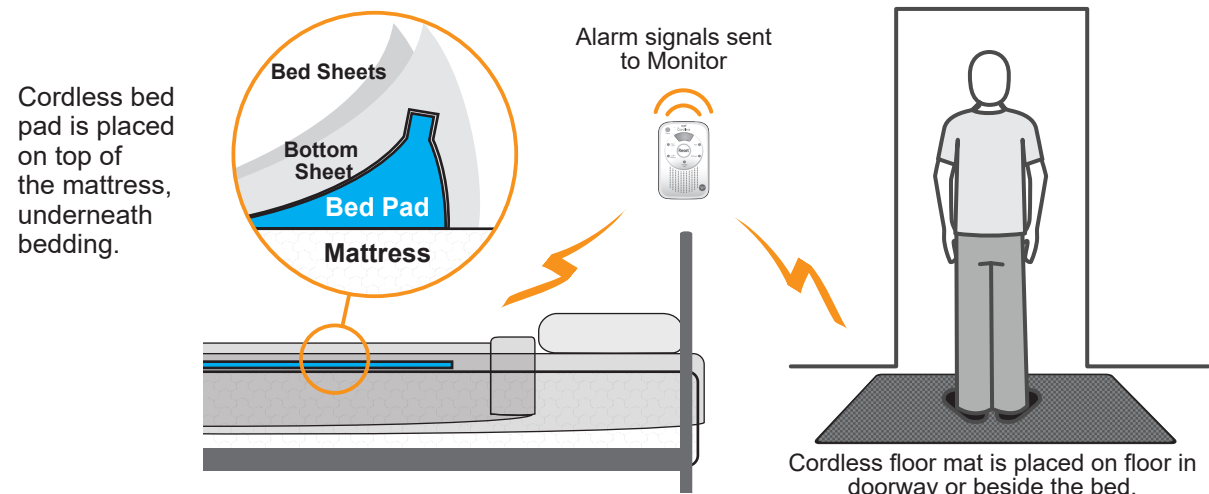
5. Turn ON the next device to add additional devices to the monitor.

6. To cycle through the memory slots press the Pause button. To clear a memory slot press and hold the Pause button so that the "F" changes back to a "0" The unit will beep 3 times when the slot is cleared.

7. Press the Program button or press and hold the Reset button to exit programming mode. If "t0" or "S0" is displayed, continue pressing the Reset button until the memory slots are displayed.

### Step 3

Place pad on mattress or position mat on floor & test prior to using.



Cordless bed pad is placed on top of the mattress, underneath bedding.

Alarm signals sent to Monitor

Cordless floor mat is placed on floor in doorway or beside the bed.