

**2701 - Falls Monitor with SafeTime**

**Included Accessories**

2642 Caregiver Reset Key

**Optional Accessories (Sold Separately)**

3516 Premium Under Mattress Bed Pad, 2626 Premium Bed Pad 1 Year, 2628 Premium Chair Pad 1 Year, 2633 Premium Heavy Duty Floor Mat 1 Year, 2623 SafeTime Bed Pad - 1 Year, 2622 SafeTime Bed Pad - 90 days, 2621 SafeTime Wheelchair / Chair Pad - 1 Year, 3504 ActiveCare Mounting Bracket, 2620 SafeTime Wheelchair / Chair Pad - 90 days, 2406 Plug Pack 6V Power Adaptor, 2642 Caregiver Reset Key, 2636 Easy Release Seatbelt, 2643 Nurse Call Cable, 2646 Nurse Call Cable 6.35 Mono - 3m, 2460 Nurse Call Cable 6.35 Stereo Plug - 2m, 2461 Nurse Call Cable 6.35 Mono to Stereo - 2m, 2493 Nurse Call Cable 6.35 Mono to 3.5 Mono - 2m



Do NOT fold Pads or Mats when in transit or storage.

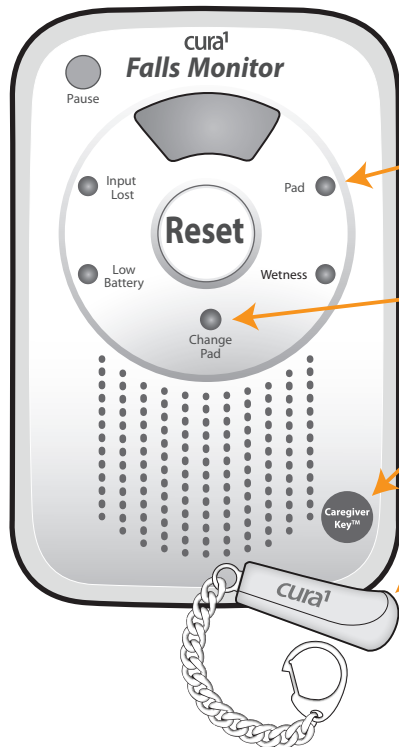


Keep Pads & Mats flat at all times.



Do not immerse or wash Pads or Mats under running water. Use a damp cloth (1/1000 bleach solution) & wipe clean. Dry all spills on mats immediately.

All our products are supplied with a full warranty and are guaranteed to be free from defects in material and workmanship.



Pad light will blink when pad is in use.

Change Pad light will illuminate & Monitor will beep when SafeTime Bed or Chair Pad expires.

Caregiver Reset Key application point.

Caregiver Reset Key (Resets the Monitor after an alarm.)

Alarm Reset Button

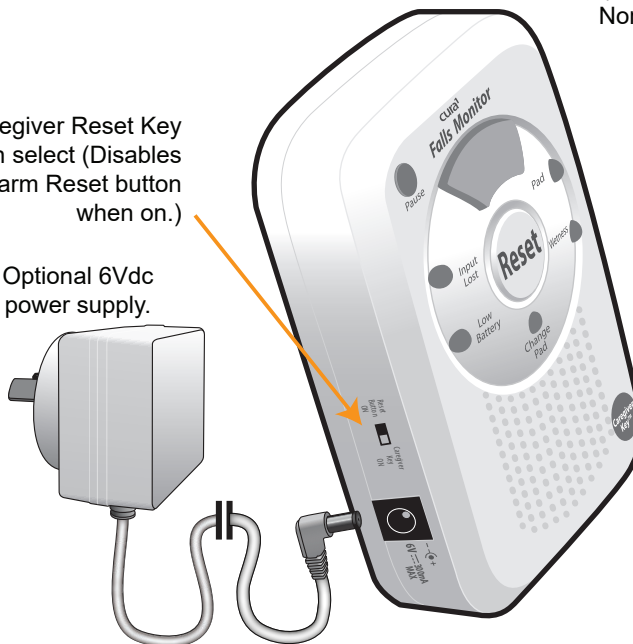


Optional Nurse Call Cable.

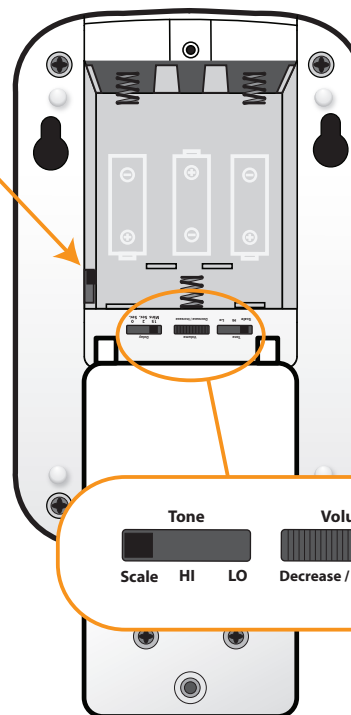
Monitor auto-mutes when connected to a Nurse Call System and volume is set to minimum.

Caregiver Reset Key option select (Disables Alarm Reset button when on.)

Optional 6Vdc power supply.



NO / NC (Normally Open / Normally Closed) selector for Nurse Call Systems.



Adjust alarm tone, volume & delay settings.

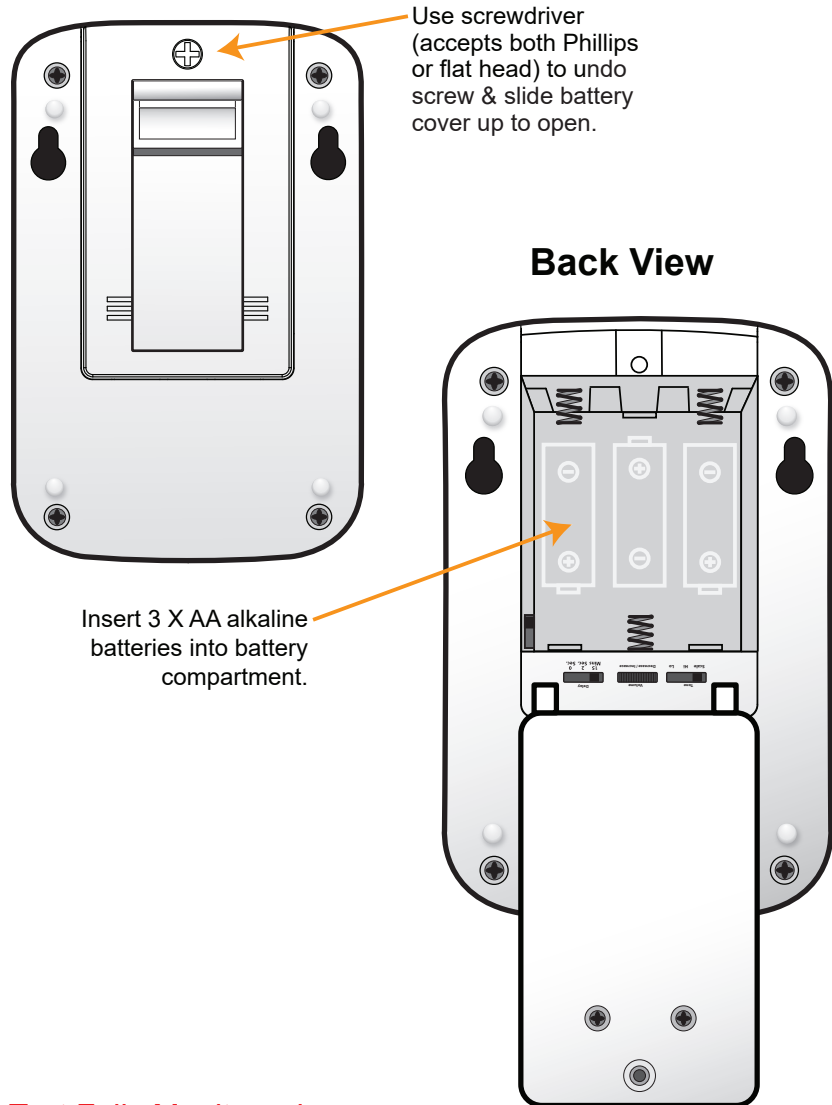
Tone		Volume		Delay		
Scale	HI LO	Decrease / Increase		15	2	0
				Mins	Sec.	Sec.

# QUICK START GUIDE

## 2701 - Falls Monitor with Safetime

### Step 1

Insert 3 x AA Alkaline Batteries. (Do not use rechargeable batteries.)

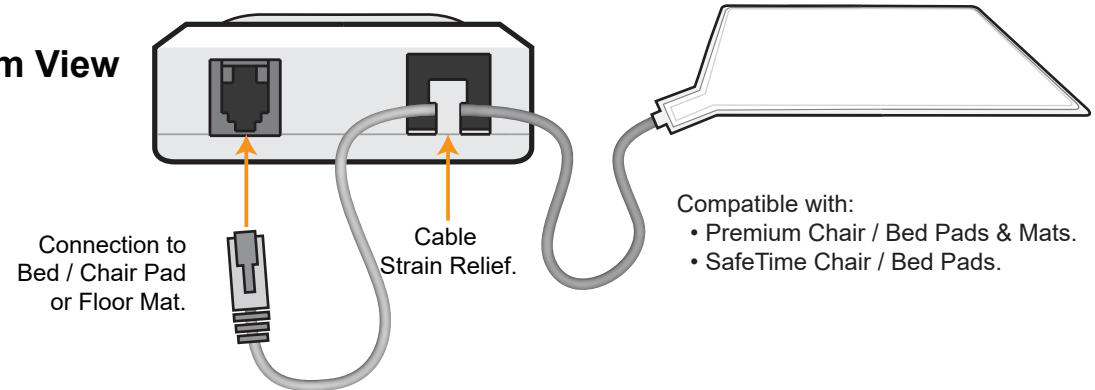


Test Falls Monitor prior to every use.

### Step 2

Connect Pad or Floor Mat to Monitor & test prior to using.

#### Bottom View



### Step 3

Place Bed Pad on mattress or position Mat on floor.

