

ACCESS

  
QUICKIE®



ACCESS

Better ACCESS to life



# QUICKIE ACCESS

INDEPENDENT PROPELLING with the BENEFITS OF TILT



Shown with JAY Fusion® cushion, JAY J3® back and Whitmyer® Plush head support.

## INDEPENDENCE

Ability to foot or hand propel.

## ACCESS

Roll under tables with the low seat to floor height.

## PRESSURE RELIEF

Up to 25° tilt and 50° recline.



### Anterior Tilt

The only chair with 5 degrees of anterior tilt for easy standing and transferring.



### Low Seat-To-Floor-Height

Even if a thick cushion is needed for pressure relief or if larger casters are preferred, a low seat-to-floor height can be maintained



### Positioning Options

Large offering of JAY and Whitmyer seating and positioning options to meet individual needs



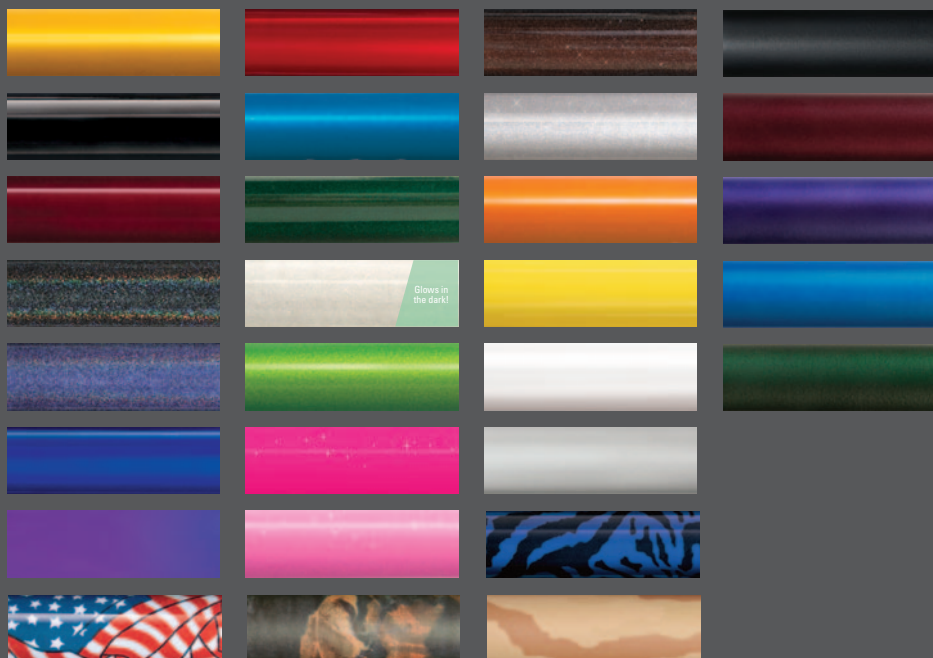
### Portable

With a transport weight of 32 lbs. and fold down back, the ACCESS can be easily lifted in and out of vehicles for access outside of the home.

## QUICKIE Paint Colors

### HIGH GLOSS COLORS

### MATTE FINISH COLORS



NOTES:  
Print processes cannot accurately represent paint finishes.  
Actual colors may vary.

Colors and patterns may vary based on type of chair  
or frame material.

Not all colors available on all products. Please see product  
order form for specific color options.

ACCESS Specifications	
Tilt Range	-5° to 20° 0° to 25°
Seat width	14" to 22"
Seat depth	14" to 22"
Seat-to-floor height	12" to 20"
Recline Back Angle	50° to 0°
Transport Weight*	14.5 kg.
User Weight Capacity	136 kg.
Transit Approved	Yes

\* 16 x 16 with armrests, footrest & rear wheels removed.

See order form as specifications may vary based upon configuration.



Sunrise Medical Australia Pty Ltd.  
11 Daniel Street  
Wetherill Park NSW 2164  
Phone: (02) 9678 6600  
Email: [enquiries@sunrisemedical.com.au](mailto:enquiries@sunrisemedical.com.au)  
[www.SunriseMedical.com.au](http://www.SunriseMedical.com.au)

© 2023 Sunrise Medical Quickie Access Brochure AU Rev A

