

RAIZER II LIFTING CHAIR

The Raizer II Lifting Chair – the perfect solution for those who have trouble getting back on their feet after a fall.

With its battery-operated mobile design, this lifting chair can help a fallen person up to an almost standing position in just a few minutes.

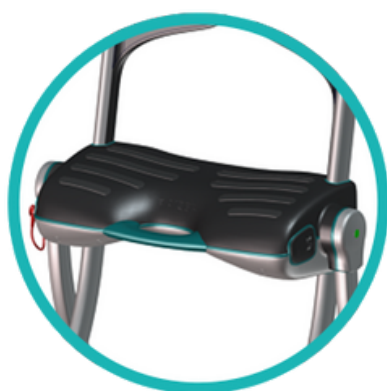
Designed to be easy to use, the Raizer II can be operated by just a single assistant, requiring only a helping hand and limited physical effort. The chair is comfortable and secure for the fallen person, ensuring a smooth and stress-free lifting experience. With a weight capacity of up to 150 kg, the Raizer II can accommodate a wide range of users, making it suitable for use in a variety of settings, such as hospitals, nursing homes, and private residences. One of the standout features of the Raizer II is its ease of assembly.



CONTACT US

INFECTION CONTROL FRIENDLY

Sleek, smooth surface allows for efficient and fast cleaning in between uses.



REMOTE CONTROL & EMERGENCY STOP

Purpose built cavity for remote, moulded to the side of the chair. Intuitive emergency stop button.



AUDIO / VISUAL FEEDBACK

Allows for clear and quick assembly of the lifting chair and instructions for use.



RAIZER II SPECIFICATIONS | JDH-MHLU-105029

Width	Overall Depth	Overall Height	Lifting Time	Number of Lifts when Charged	Product Weight
686mm	257mm	19cm	20-30 seconds	40 at max. load. 80 at average load.	13kg
Battery Capacity	Charging Time	Charging of Empty Battery	Maximum Lift Capacity	Lifting Time	Power Supply
80 Lifts per Charge	6 hours	10 - 15 mins = 1 lift	150kg	20-30 seconds	Battery with USB Charger and 15W Charger for power socket

[CONTACT US](#)